

THIS INSTRUMENT PREPARED BY  
 DAVID P. LINDLEY  
 OF  
**CAULFIELD and WHEELER, INC.**  
 SURVEYORS - ENGINEERS - PLANNERS  
 7900 GLADES ROAD, SUITE 100  
 BOCA RATON, FLORIDA 33434 - (561)392-1991

# PALM BEACH PARK OF COMMERCE, P.I.P.D. - PLAT 19

BEING A REPLAT OF ALL OF PARCEL 2A, PALM BEACH PARK OF COMMERCE P.I.P.D. - PLAT 13 REPLAT, ACCORDING TO THE PLAT THEREOF, AS RECORDED IN PLAT BOOK 127, PAGE 137,  
 AND LOTS 4G AND 5G, PALM BEACH PARK OF COMMERCE, P.I.P.D., PLAT NO. 1, ACCORDING TO THE PLAT THEREOF, AS RECORDED IN PLAT BOOK 56, PAGE 172,  
 ALL OF THE PUBLIC RECORDS OF PALM BEACH COUNTY, FLORIDA  
 LYING IN SECTION 18, TOWNSHIP 41 SOUTH, RANGE 41 EAST, PALM BEACH COUNTY, FLORIDA

### LEGEND/ABBREVIATIONS

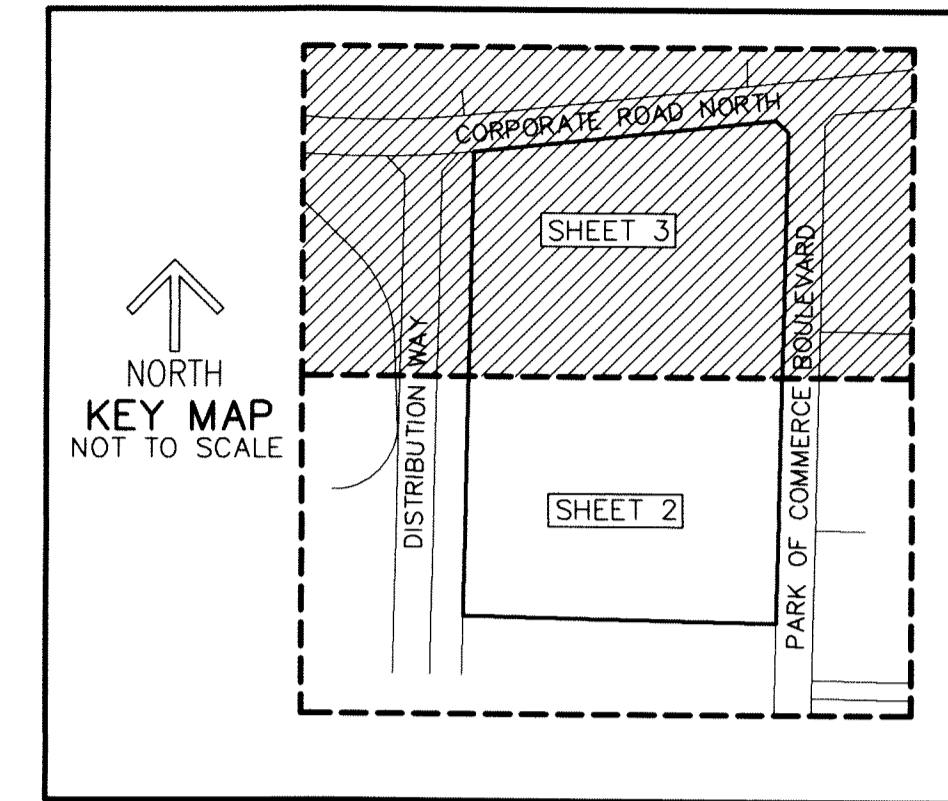
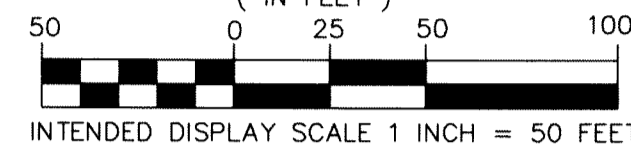
- ⊕ - CENTERLINE
- E - EASTING
- FPL - FLORIDA POWER & LIGHT CO.
- LAE - LIMITED ACCESS EASEMENT
- LB - LICENSED BUSINESS
- N - NORTHING
- O.R.B. - OFFICIAL RECORD BOOK
- UE - UTILITY EASEMENT
- N.P.B.C.I.D. - NORTHERN PALM BEACH COUNTY IMPROVEMENT DISTRICT
- P.I.P.D. - PLANNED INDUSTRIAL PARK DEVELOPMENT
- S.B.T.&T. - SOUTHERN BELL TELEPHONE AND TELEGRAPH COMPANY
- PRM - INDICATES SET 4" X 4" X 24" CONCRETE PERMANENT REFERENCE MONUMENT WITH ALUMINUM DISK STAMPED "C&W PRM LB3591" UNLESS OTHERWISE NOTED.

### NOTES COORDINATES, BEARINGS AND DISTANCES

COORDINATES SHOWN ARE GRID  
 DATUM = NAD 83 1990 ADJUSTMENT  
 ZONE = FLORIDA EAST  
 LINEAR UNIT = US SURVEY FEET  
 COORDINATE SYSTEM 1983 STATE PLANE  
 TRANSVERSE MERCATOR PROJECTION  
 ALL DISTANCES ARE GROUND, UNLESS OTHERWISE NOTED  
 SCALE FACTOR = 1.00000579  
 GROUND DISTANCE X SCALE FACTOR = GRID DISTANCE  
 BEARINGS AS SHOWN HEREON ARE GRID DATUM,  
 NAD 83 1990 ADJUSTMENT, FLORIDA EAST ZONE.



### GRAPHIC SCALE ( IN FEET )



158

**SHEET 3 OF 3**

